

In Depth

Live TV

Pick Programmes to Record

Channel Highlights & Inside TiVo

Now Playing

Summary of Features



Live TV

There are two ways of watching live TV:

- Press the Live TV/Guide button at the top of the Remote Control. This button always takes you directly to live TV.
- Pressing the TiVo button takes you to **TiVo Central**. From the **TiVo Central** menu, highlight **Watch Live TV** and press the RIGHT arrow.



Changing Channels

Use the CHAN/PAGE UP/DOWN buttons to change channels. Only the channels you select in **Channels You Watch** under **Messages & Setup** are shown, (see “Customise Channels” on page 66). This way, you can skip channels you never watch.

You can also change channels by pressing the number buttons on your Remote Control. The channel will automatically change after a few seconds, or you can press ENTER/JUMP after the channel number to make the change right away.

The Programme Banner

The Programme Banner at the top of the screen displays the programme’s title, channel, running time, and rating, as well as the current time. The Programme Banner will remain displayed for a few seconds and then will disappear from the screen. To clear the Programme Banner immediately, press the CLEAR button. Press the RIGHT arrow to bring back the banner at any time. You can cycle between a small version (channel only), a medium version (title and channel), and a long version (which includes the description).

The Status Bar

Whenever you press PAUSE or use other Trick Play™ buttons while watching TV, the Status Bar appears on the lower part of your screen. In live TV the Status Bar always shows you a one-hour window (note the time markings to the left and right). For recorded programmes the Status Bar shows the programme length (e.g. if you are watching a two hour programme the Status Bar will show two hours).

The green portion of the bar represents the part of the programme that's stored. In live TV, you may be able to go forward or back up to 30 minutes. For recorded programmes, the green portion is usually the whole duration of the programme. If the recording is still in progress, or part of the recording was missed, then the unrecorded part will be black.

The white vertical line on the Status Bar tells you where you are in the recording. While watching live TV, the right edge of the green portion represents the current time. If the white line is not on the right edge of the green portion then you are behind real time.

An icon representing the play function you are using appears immediately below the bar. For instance, whenever the BACK or FWD buttons are pressed, the Status Bar shows you the direction and speed of play. Above the bar is a time tab that shows you the time for the segment of video you are playing.



3


Recording a Live Programme

You can instantly record a live programme while you are watching it. Press the RECORD button on your Remote Control any time during the programme to start recording. The recording will stop automatically at the end of the programme. Remember though, the recording starts when you press the RECORD button. If you are watching a programme that is on from 9:00 to 10:00 and you press RECORD at 9:15, you will record only from 9:15 to 10:00.



What's On Live TV?

While watching live TV, you can use the Programme Guide to see what programmes are on now, and coming up soon. Press the LIVE TV/GUIDE button on the Remote Control to display the Programme Guide. To conceal the Programme Guide, press LIVE TV/GUIDE again.



The screenshot shows a TV Programme Guide interface. At the top, it displays the current channel '401 SKYSP1' and time '2:30 pm'. Below this, a highlighted programme 'Simpsons' is shown with its time slot '7:30 pm - 8:00 pm' and a description: 'Homer and Bart take on a dead man's delivery, while Marge has her own purchasing adventures'. Below the main programme, there are two columns of programme listings. The left column lists programmes for '7:30 pm' on various channels like SKY1, UKG, UKG2, LIVING, GRNDA, CHALL, BRAVO, and PARA. The right column lists programmes for '19:30' on '106 Sky1', including 'Simpsons', 'JAG', 'WWF', 'Toughman', 'Voyager', 'New York Undercover', and 'In The Heat Of The ...'. Annotations with arrows point to various parts of the screen, explaining how to navigate through the guide.

Title and programme description, which change as you highlight the programmes below

When the highlight is on the left side of the screen:
Use the FWD and BACK buttons to change the time slot listed.

Use the UP/DOWN arrows to highlight programmes. Press SELECT to watch a programme that's on now.

You can enter a channel number at any time by using the number keys on the Remote Control.

When the highlight is on the right side of the screen:
Use the FWD and BACK buttons to change the channel listings.

Use LEFT and RIGHT arrows to move the highlight back and forth between the two lists.

Use the UP/DOWN arrows to highlight programmes. Press SELECT to record a programme that's on later.

This column lists all programmes during this time slot.

This column lists what's coming up on the channel you have highlighted.

Use CHAN UP/DOWN to scroll the lists down screen by screen.

3



Pick Programmes to Record

To record a programme, start from **TiVo Central** and select **Pick Programmes to Record**. Choose either **Search By Name**, **Browse By Channel**, **Browse By Time**, or **Manually Record Time/Channel** from the menu.

Search By Name

Use this function if you know the name of the programme you want to record. This function will search through all the listings for you and find out when the programme is on.

Programme titles under this function can be filtered by categories. If you're not sure which category your programme belongs to, select **All Programmes** and continue your search from there.

- After either selecting the category of your programme (or choosing **All Programmes**), you will see a screen with an alphanumeric grid.
- Using the arrow buttons on the Remote Control to move the white box frame around the alphanumeric grid. Press SELECT on each of the first few letters of your programme title. As you select the letters, a list of programmes will appear on screen, to the right of the grid. Continue entering letters until your programme is listed.
- If you make a mistake, navigate to DEL and press SELECT, this will delete the last letter you entered. To clear all your letters, navigate to CLR and press SELECT.
- When you see the programme you want

- to record, press the RIGHT arrow to move the highlight bar over to the programme list.
- Use the UP and DOWN arrows to highlight your programme name and press SELECT to go to the **Programme Information** screen.

Programme Information Screen

Whenever you press the RIGHT arrow on a programme title, you will see a **Programme Information** screen. This screen lists the name of the programme, its description, and other relevant information like the start time, channel, duration, rating, etc. This screen also tells you if you have already set up your TiVo Recorder to record the programme or if you have a Season Pass.

At the top of the screen, next to the title, are the THUMBS UP/DOWN icons for the programme. You can press THUMBS UP/DOWN when you are on this screen to rate the programme. You can grade each programme with as many as three THUMBS UP or DOWN.

Information about the programmes you rate and the programmes you record is logged into TiVo as your personal TV preferences. If you have ever recorded the programme, you will see one THUMB UP already displayed.

By pressing the CHAN/PAGE UP/DOWN buttons you can move up and down from the **Programme Information** screen to see information about other programmes in your particular category.



3



You can also use Search by Name to browse through all the programmes in a particular category. Choose a category and press SELECT on “A” (or use the number keys to enter the number “0”). A listing of all the category’s programmes will come up, from which you can browse and select.

Below the programme description, the screen lists the various actions you can take. These actions vary depending on whether you've just found the programme, already set the programme up to record, or already have a Season Pass. Use the UP or DOWN arrows to highlight the action you want to take, then press RIGHT arrow.

- **Record this programme** (and set the recording quality)
- **Book a Season Pass** (and set the recording quality)
- **Don't do anything** The LEFT arrow simply takes you back to wherever you were, without changing anything.



Season Pass

When you select a programme to record, you can choose to **Book a Season Pass**. With this feature, every episode that is broadcast on the particular channel will be recorded automatically. If the broadcaster changes the time and day the programme is shown, TiVo will automatically record at the new time. If you book a Season Pass all episodes of the requested programme on this channel will be recorded.

If you schedule lots of Season Passes, the Recorder may need to delete the oldest recorded Season Pass recordings after less than two days in order to make room for other recordings you have requested. If you find that your Season Pass programmes are getting deleted before you've had a chance to watch them, you may need to cancel some of your Season Passes.

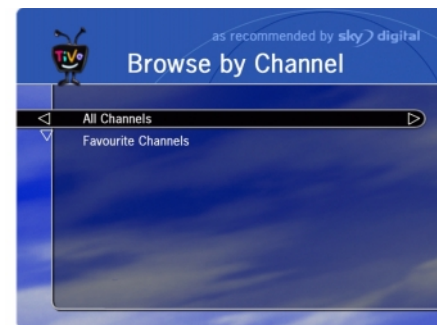
Browse by Channel

Choose this option if you want to browse only the programmes on a particular channel.

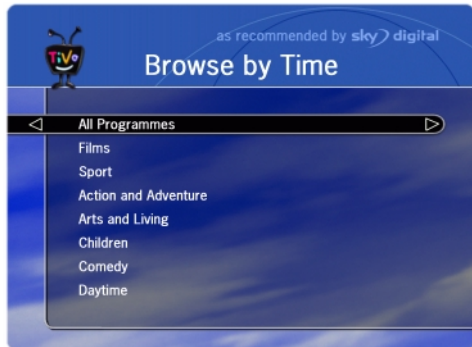
With **Browse by Channel**, you can filter through your favourite channels under the **Favourite Channels** screen – for more information on customising channels, see *Appendix B -Setting Up Your TiVo Recorder–* or browse any channel you receive by going to the **All Channels** screen.

To find a programme using **Browse by Channel**:

- Select **All Channels** then use the UP/DOWN arrows to select a specific day of programming that you'd like to browse. Press the RIGHT arrow to move the highlight to the channel column.
- Next, use the UP/DOWN arrows to select a channel. You can also use the number buttons on the Remote Control to type in a channel number. If the channel is not part of your subscription package, you will see the next available channel.
- Press SELECT to bring up the list of programmes without leaving the channel selector, or press the RIGHT arrow to bring up the list of programmes and move to the list at the same time.
- To record a programme, highlight the programme title and press the RIGHT arrow. This will take you to the **Programme Information** screen.



3



TiVo's Remote Control cannot authorise Pay-Per-View events. You would need to authorise the event the way you normally do with your set-top box Remote Control.

Browse by Time

Choose this option if you want to browse all programmes on a particular day and time. For example, you can browse all the films showing on Saturday night.

With **Browse by Time**, you can filter the list to see only programmes on your **Favourite Channels**, or only programmes in a particular category. To find a programme:

- Use the UP/DOWN arrows to select a particular day of programming that you'd like to browse. Press the RIGHT arrow to move the highlight to the time column.
- Next, use the UP/DOWN arrows to select a time. The time will advance in half-hour increments.
- Press SELECT to bring up the list of programmes without leaving the time selector, or press the RIGHT arrow to bring up the list of programmes and move to the list at the same time.
- To record a programme, highlight the programme title and press the RIGHT arrow. This will take you to the **Programme Information** screen.

Manually Record Time/Channel

To override the programme guide data and record a specific channel for a specific length of time, choose this method of recording. This feature allows you to schedule a recording in much the same way you would program your VCR. To do this:

- 1 First use the UP/DOWN arrows to choose the Recording Type, (choose **Repeating** to manually record your programme every day, every weekday, or once a week). Then press the RIGHT arrow.
- 2 Use the UP/DOWN arrows to choose the day(s) for your recording, then press the RIGHT arrow.
- 3 Use either the number buttons or the UP/DOWN arrows to choose a channel. If, for example you enter channel 8 and this is not in your subscription package, you will see, **8 Sat, 8 Cab or 8 Aer**, depending on your programme source (satellite, cable, or aerial). Press the RIGHT arrow.
- 4 Use UP/DOWN arrows to set the hour, minute, and am/pm for the start and stop time. Press the RIGHT arrow in between each step.
- 5 Use the UP/DOWN arrows to set the recording quality.
- 6 To set the recording, press SELECT. You will see a screen asking you to confirm your recording. The recording will be named with a “best guess” of what is listed in the programme guide data for that time and channel. This will help you find your programme later on the **To Do List** or **Now Playing** screen.



The Manual Recording feature is particularly useful for recording sporting events that may overrun their schedule.

3





- Programmes that you record are automatically given one THUMBS UP, and this information is added to your personal TV preferences. You can always remove this THUMB by pressing THUMBS DOWN on the programme.
- If you don't want TiVo's Suggestions to be recorded automatically, you can turn this setting off. From the Messages & Setup screen, select TiVo's Suggestions and then choose "No."

TiVo's Suggestions

TiVo's Suggestions contains suggestions for programmes you might enjoy. The list is ranked, so that the programmes you are most likely to enjoy are near the top.

Every time you press the THUMBS UP/DOWN buttons the data is added to your personal TV preferences. Your preferences take into account the specific programmes you enjoy, as well as the genres (such as drama, comedy, etc.). The TiVo Recorder can also recognise the actors, directors, and other elements of a programme you like.

You can use the THUMBS buttons in any of these situations:

- watching live TV
- browsing through the programme guide
- selecting programmes to record
- browsing **TiVo's Suggestions**
- looking through **Channel Highlights** or **Inside TiVo**

Anytime you press the THUMBS UP/DOWN buttons, your feedback will be processed immediately and you will see programmes appear or disappear from **TiVo's Suggestions**, or re-order themselves on the list.

Every night, your Recorder will also run through its latest programme guide data and search through the hundreds of programme titles to make more suggestions based on your updated TV preferences.

Recording Suggestions

If you want to explicitly record one of **TiVo's Suggestions**, highlight the programme name and press SELECT to see Programme Information screen. Then confirm the recording in the normal manner. Whenever there is empty space on **Now Playing** and one of **TiVo's Suggestions** is broadcast, the programme will automatically be recorded for you. These suggestions are marked with a TiVo icon when they appear on **Now Playing**.

Don't worry, the TiVo Recorder will never delete a programme you have requested in order to make room for one it has suggested. Also, it will never deny your request for a recording because one of its suggestions has taken up the needed capacity.

To Do List

The **To Do List** shows you all the programmes you've set up to record. It lists both individual recordings and Season Passes. After you have scheduled the Recorder to record a particular programme, you can confirm that it will be recorded by checking your programme's name in the **To Do List**. To the left of the programme name will be a tick, indicating that TiVo is set to record your programme. Season Passes are marked with a double tick. Season Passes that don't have any upcoming episodes are listed at the bottom of the list.

From the **To Do List**, you can cancel a recording, change a recording to a Season Pass, or skip an episode of a particular programme's Season Pass. To do any of these things highlight the programme title and press SELECT to access the **Programme Information** screen.

3





If you set the recording level at Best Quality for all of your programmes, you may find that you will run out of disk space more quickly.



Understanding Capacity and Conflicts

Whatever method of recording you select, you can choose from 4 options of recording quality. The higher quality settings take up more disk space, and will give you fewer hours of recording time.

| One Hour of Best Quality equals about | Suggested use |
|---------------------------------------|----------------------------|
| 3 hours of Basic Quality | Animation, "Talking heads" |
| 2 hours of Medium Quality | Daytime Talk Shows |
| 1.5 hours of High Quality | Dramas, Films |
| 1 hour of Best Quality | Sports, Action |

You can set the default recording quality in **Messages & Setup**, under **Video Recording Quality**. We recommend that you record several programmes at different recording qualities and decide on a default setting based on the type of programmes you watch most often. When you set up an individual recording, you can change the quality setting from the default on **Programme Information** screen.

Conflicts

Conflict screens inform you about any overlapping programmes or insufficient space problems. A **Conflict** screen will list what the problems are, and propose a solution. You can either accept or decline the proposal. You may also choose to manage the situation yourself by deleting programmes found on the **To Do List** or **Now Playing** and then trying again to schedule the recording.

In practice, you shouldn't have to worry too much about conflicts. Your Recorder will arrange the schedule to keep programmes recorded for as long as it can, and only delete them to make room for other programmes you requested.

When you schedule a recording, the Recorder first verifies that you haven't asked for another programme to be recorded at an overlapping time. If you have an overlapping programme, you will be asked to choose which one you would like to record.

The Recorder also anticipates whether there will be enough disk space for you to record your programme. If there isn't enough space, you will need to delete some of your other recorded programmes sooner than planned.

The Confirmation Screen

After you request a recording or Season Pass, and resolve any conflicts, you will see a confirmation screen that lets you know your recording has been added to the **To Do List**. Normally, programmes are saved for at least two days, and this is indicated in the confirmation. For individual recordings, if you know you will not have time to watch your programme, you can choose **Save longer**, which will add one day every time you select it, or you can choose **Save until I delete**.

If either of these options create space conflicts, you will see the conflicts presented. When you are finished, highlight **Done** and press SELECT.



If there are several conflicts at once, you will need to scroll down to see them. Use CHAN/PAGE UP/DOWN to do this.



3



For Season Passes and manual recordings, you must wait until they are recorded before you can "Save Longer."



Channel Highlights also allows you to browse what's coming up on channels you don't currently receive, but remember you can't record a programme showing on a channel to which you don't subscribe.

Channel Highlights & Inside TiVo

Channel Highlights are listings of the best programmes offered by TV broadcasters. In **Channel Highlights**, broadcasters group programmes together into themed packages, giving you one-stop convenience when browsing through or selecting programmes for recording. Packages include the latest blockbuster movies, sporting occasions, and popular soap series. **Channel Highlights** are updated several times per week.

For the latest information about the best programmes on TV, check out **Inside TiVo**. It's your insider's guide to the best television has to offer, and brings you packages of programmes from a variety of sources designed to keep you up to date on the latest trends, hottest stars, and celebrity news.

To record from **Channel Highlights**:

- Press the RIGHT arrow to choose particular **Channel Highlights**. You will see the programming divided into themed packages.
- Highlight a package name that appeals and press the RIGHT arrow.

- Choose an individual programme and press the RIGHT arrow. This will take you to the **Programme Information** screen. From here, you can choose to record a specific programme, or, if the programme is episodic, you can choose to **Book a Season Pass**. You can also mark the programme with THUMBS UP or DOWN.

Updated Channel Highlights

Channel Highlights are updated several times a week during TiVo's daily phone call. Channels frequently update their collections of programming, so keep checking **Channel Highlights** daily!

Inside TiVo

Inside TiVo provides you with the opportunity to select theme packages of programming from a wide variety of broadcasters and networks. This is a fun, original, and sometimes irreverent guide to the "Best of What's On." **Inside TiVo** provides new programming regularly.

Inside TiVo puts together programming from across the TV universe, such as a collection of your favourite talk shows, top soap operas, theme movie packages, holiday specials, children's programming or sporting events.

Selecting programming from **Inside TiVo** works in just the same way as the **Channel Highlights**.




3



Now Playing

To watch recorded programmes, go to the **Now Playing** screen from **TiVo Central**. Highlight the listed programme you want to watch and press **SELECT** or **PLAY**. The programme will start playing from the beginning. If you stop watching the recording partway through - for example, to watch live TV - you can come back and pick up where you stopped watching. Just press **PLAY** from **Now Playing**.

You can also skip to the end of the recording by pressing **ADVANCE** , or to the beginning by pressing **ADVANCE** a second time.

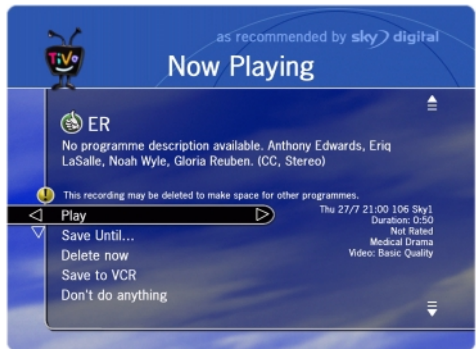
The first programmes listed on **Now Playing** are the ones that you have specifically chosen to record. The programmes are arranged with the most recent recordings appearing higher on the list.

Now Playing may also contain programmes from **TiVo's Suggestions** list. **TiVo's Suggestions** are based on your **THUMBS UP/DOWN** preferences and also programmes you have recorded in the past. Whenever there is empty space available, programmes from **TiVo's Suggestions** list are recorded until it is filled to capacity. **TiVo's Suggestions** programmes appear after all your specifically requested programmes, and are marked with the TiVo icon, with the most recent recordings appearing higher on the list.

Programmes that you specifically chose to record are usually saved for at least two days but can be saved longer or deleted if you choose. When you request a lot of programmes to be recorded, you may get conflicts and need to shorten the amount of time you save each programme. Once a programme appears on the **Now Playing** screen, you can decide how long you would like to keep it. The coloured icons appearing to the left of programme titles indicate the following:

- **Green circle** – You have marked this programme **Save Until I Delete**.
- **Yellow circle** – This programme may be deleted in less than one day to make room for other programmes that you request.
- **Exclamation mark** – This programme may be deleted at any time to make room for other programmes that you request.
- **TiVo icon** – This is a programme from **TiVo's Suggestions**, and, since there was extra space, was automatically recorded. These programmes are the first to be deleted if you request a new recording, so if you want to watch it later, choose **Save Longer**.
- **Red circle** – This programme is currently being recorded (also note the red LED on the front of the Recorder is illuminated).

Programmes appear on **Now Playing** the moment they begin recording. You can start watching a programme from the beginning, even while it is still in the process of recording.



Use the CHAN/PAGE UP/DOWN buttons to go from this screen to the Now Playing Programme Information screen for the other programmes in Now Playing. It's useful if you want to see the descriptions of all your programmes.

The Now Playing Programme Information Screen

Press the RIGHT arrow on a programme title to see the **Now Playing Programme Information** screen. This screen lists all pertinent information such as start time, channel, duration, rating, etc. It also tells you how long the programme will be saved.

At the top of the Information screen, next to the title, you can see the THUMBS UP/DOWN icons. You can press THUMBS UP/DOWN when you are on this screen to rate the programmes.

Below the programme title is its description. This includes a brief programme synopsis and also lists ratings and other attributes for the particular episode or programme. Here is a list of the ratings, content codes and other attributes that you may see after the programme description:

Rating Codes

| | |
|-----------|---|
| U | Suitable for all audiences, including young children. |
| PG | Parental guidance recommended. |
| 12 | Suitable for viewers aged 12 years or over. |
| 15 | Suitable for viewers aged 15 years or over. May contain strong language, violence or themes unsuitable for younger viewers. |
| 18 | Suitable only for adult viewers aged 18 or over. |

In addition to the rating, a programme may also have content codes.

Content Codes

| | |
|----------|--|
| s | The programme contains sex and nudity. |
| l | The programme contains strong language. |
| v | The programme contains violent scenes. |
| m | The programme contains violent material. |

Other Attributes

A programme may have other attributes (see table below). These are displayed in parentheses after the programme's rating.

| | |
|----------|---|
| C | Copy protected. If you try to record this programme it may not play back correctly. |
| D | Surround Sound. Only applicable if your TV has surround sound capabilities. |
| L | Letterbox format. The programme is being shown in wide 'cinema style' format with black borders across the top and bottom of the picture. |
| T | Subtitles. Language and/or subtitles for the hard of hearing are being shown. |
| W | Widescreen. The programme is being shown in widescreen format. |

3



If you SELECT “Save Longer” or “Save Until I Delete” (on the Save Until... screen), your Recorder will check to see if it has enough disk space. If another scheduled programme needs that space soon, you will see a conflict screen asking you how you want to resolve the problem.



- Saving programmes from the Recorder to your VCR happens in real time. That means if a programme is two hours long, it will take two hours to save it to your VCR.
- You can only archive programmes from TiVo to your VCR. There is no provision to copy from your VCR to the TiVo Recorder.

Description of Actions

Below the programme description are the actions you can take. To choose an action Press the UP or DOWN arrows to highlight an action, then press SELECT.

- **Play:** Instantly starts playing the recording. If you have previously played the recording and paused it at some point, the menu says **Resume Playing**. Highlight **Resume Playing** and then press SELECT to restart the programme at the point where you paused.
- **Save until...:** Takes you to a dialogue screen where you can specify how long to save your recording. You can add days (one at a time), or you can choose **Save Until I Delete**. For example, to save a programme for three additional days, highlight the **Save Longer** option and press SELECT three times. The text in the middle of the screen will update and tell you how long the programme will be saved.
- **Delete now:** Deletes the recording. You will get a confirmation dialogue when you choose **Delete Now**. You can either confirm the deletion or change your mind and cancel.
- **Save to VCR:** Records a programme from **Now Playing** onto a videotape. To do this, follow the steps below:
 - Have your VCR set up and ready to record when you choose this option.
 - Choose **Start the Countdown**.
 - When the countdown reaches 2, press the RECORD button on your VCR. The recording will begin playing a “clean” version with no banners displayed.
- **Don’t do anything:** Takes you back to the **Now Playing** screen. Pressing the LEFT arrow always takes you to this “safe” option.

By-pass buttons

Your Remote Control has two bypass buttons; AUX bypass and VCR bypass.

The VCR button is used to turn the VCR bypass on. The AUX button is used to turn the Set-top box/Satellite receiver bypass on. Pressing any button, with the exception of the VOL and MUTE buttons, will automatically take the system out of either bypass mode and return the viewer to **TiVo Central**.

AUX button

Press the AUX bypass on when you need to access interactive services or view programmes via your Set-top box when the TiVo Recorder is recording from an aerial source or saving programmes to your VCR.

VCR button

Press the VCR bypass on when you want to watch programmes directly from your VCR. Note that the TiVo Recorder will continue to record normally when in bypass mode.



3

